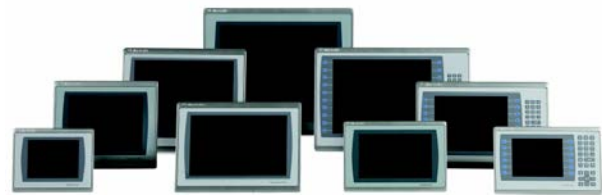


PanelView Plus 7 Performance Terminals

Catalog Numbers 2711P-T7C22D9P, 2711P-T7C22A9P, 2711P-B7C22D9P, 2711P-B7C22A9P, 2711P-T9W22D9P, 2711P-T9W22A9P, 2711P-T10C22D9P, 2711P-T10C22A9P, 2711P-B10C22D9P, 2711P-B10C22A9P, 2711P-T12W22D9P, 2711P-T12W22A9P, 2711P-T15C22D9P, 2711P-T15C22A9P, 2711P-B15C22D9P, 2711P-B15C22A9P, 2711P-T19C22D9P, 2711P-T19C22A9P

Topic	Page
Environmental Specifications	2
Certifications	3
Technical Specifications	4
Product Dimensions	7
Accessories	8
HMI Software	9
Additional Resources	10

The PanelView™ Plus 7 Performance terminals are operator interface devices. They monitor and control devices that are attached to ControlLogix® and CompactLogix™ 5370 controllers on an EtherNet/IP network. Animated graphic and text displays provide operators a view into the operating state of a machine or process. Operators interact with the control system by using touch screen or keypad input.



Features include the following:

- FactoryTalk® View Machine Edition software, version 8.1, provides a familiar environment for creating HMI applications
- Windows CE operating system with desktop access for configuration and third-party applications
- Connection to ControlLogix or CompactLogix 5370 controllers
- Ethernet communication that can support device-level ring (DLR), linear, or star network topologies
- Web browser, Microsoft file viewers, text editor, PDF viewer, remote desktop connection, and media player on the terminal desktop



Environmental Specifications

Table 1 - Environmental Specifications - PanelView Plus 7 Performance Terminals

Attribute	2711P-T7C22D9P, 2711P-T7C22A9P, 2711P-B7C22D9P, 2711P-B7C22A9P, 2711P-T9W22D9P, 2711P-T9W22A9P, 2711P-T10C22D9P, 2711P-T10C22A9P, 2711P-B10C22D9P, 2711P-B10C22A9P, 2711P-T12W22D9P, 2711P-T12W22A9P, 2711P-T15C22D9P, 2711P-T15C22A9P, 2711P-B15C22D9P, 2711P-B15C22A9P, 2711P-T19C22D9P, 2711P-T19C22A9P
Temperature, operating ⁽¹⁾	0...55 °C (32...131 °F)
Temperature, nonoperating	-25...70 °C (-13...158 °F)
Heat dissipation ⁽²⁾	7 in. DC (both touch only and combo), 51 BTU (typ) 7 in. AC (both touch only and combo), 53 BTU (typ) 9 in. DC, 55 BTU (typ) 9 in. AC, 58 BTU (typ) 10 in. DC (both touch only and combo), 51 BTU (typ) 10 in. AC (both touch only and combo), 56 BTU (typ) 12 in. DC, 60 BTU (typ) 12 in. AC, 67 BTU (typ) 15 in. DC (both touch only and combo), 61 BTU (typ) 15 in. AC (both touch only and combo), 68 BTU (typ) 19 in. DC, 114 BTU (typ) 19 in. AC, 119 BTU (typ)
Altitude, operating	2000M
Relative humidity	5...95% without condensation
Vibration	0.012 pk-pk, 10...57 Hz 2g peak at 57...500 Hz ⁽³⁾
Shock, operating	15 g at 11 ms
Shock, nonoperating	30 g at 11 ms
Enclosure ratings	NEMA and UL Type 12, 13, 4X, also rated IP66 as Classified by UL

(1) The 19-inch terminals (2711P-T19C22D9P and 2711P-T19C22A9P) are rated up to 50 °C (122 °F) operating temperature.

(2) Typical BTU measurements were taken at 25 °C.

(3) The 15-inch and 19-inch terminals (2711P-T15C22D9P, 2711P-T15C22A9P, 2711P-B15C22D9P, 2711P-B15C22A9P, 2711P-T19C22D9P, 2711P-T19C22A9P) are rated to: 0.006in. pk-pk, 10...57 Hz, 1g peak at 57...640 Hz.

Certifications

Table 2 - Certifications - PanelView Plus 7 Performance Terminals

Certification ⁽¹⁾	2711P-T7C22D9P, 2711P-T7C22A9P, 2711P-B7C22D9P, 2711P-B7C22A9P, 2711P-T9W22D9P, 2711P-T9W22A9P, 2711P-T10C22D9P, 2711P-T10C22A9P, 2711P-B10C22D9P, 2711P-B10C22A9P, 2711P-T12W22D9P, 2711P-T12W22A9P, 2711P-T15C22D9P, 2711P-T15C22A9P, 2711P-B15C22D9P, 2711P-B15C22A9P, 2711P-T19C22D9P, 2711P-T19C22A9P
cULus	cULus Listed Industrial Control Equipment for use in Hazardous Locations (E10314) per standards ANSI / ISA 12.12.01 and CSA C22.2 No. 213. rated: <ul style="list-style-type: none"> Class I, Div 2, Groups A, B, C, D Enclosure type ratings per UL50 and CSA C22.2 No. 94.2-07. Enclosure ingress protection classified by UL per IEC 60529
CE (EMC)	European Union 2004/108/EC EMC Directive, compliant with: <ul style="list-style-type: none"> EN 61000-6-2; Industrial Immunity EN 61000-6-4; Industrial Emissions EN 61131-2; Programmable Controllers
CE (LVD)	European Union 2006/95/EC Low Voltage Directive, compliant with: <ul style="list-style-type: none"> EN 61131-2; Programmable Controllers
RCM	Australian Radio communications Act, compliant with: AS/NZS CISPR 11; Industrial Emissions
RoHS	China RoHS, Turkey RoHS, European RoHS
KCC	Certificate of compliance
EtherNet/IP	ODVA conformance tested to EtherNet/IP specifications

(1) When marked. See the Product Certification link at <http://www.ab.com> for Declarations of Conformity, Certificates, and other certification details.

Technical Specifications

The tables in this section provide technical specifications for the PanelView Plus 7 Performance terminals.

Table 3 - PanelView Plus 7 Performance 7-in and 9-in Terminals

Attribute	7-in. Touch		7-in. Touch with Keypad		9-in. Touch	
	2711P-T7C22D9P	2711P-T7C22A9P	2711P-B7C22D9P	2711P-B7C22A9P	2711P-T9W22D9P	2711P-T9W22A9P
Operator input	Touch		Touch with keypad		Touch	
Display type	TFT Color					
Display size, diagonal	6.5-in.				9-in. widescreen	
Viewing area (WxH)	132 x 99 mm				196 x 118 mm	
Display resolution	640 x 480 VGA, 18-bit color graphics				800 x 480 WVGA, 18-bit color graphics	
Aspect ratio	4:3				5:3	
Brightness, typical	300 cd/m ² (Nits)					
Backlight life	White LED, solid-state Life: 50,000 h min at 40° C to half-brightness, backlight is not replaceable					
Touch screen	Analog resistive Actuation rating: 1 million presses Operating force: 100 grams					
Battery (real-time clock backup)	Accuracy: +/-2 minutes per month. Battery life: 4 years min at 25 °C (77 °F) Replacement: CR2032 lithium coin cell					
Memory	System	1 GB				
	User	512 MB				
Secure Digital (SD) card slot	One SD card slot for external storage; supports cat. no. 1784-SDx cards					
USB ports	Host	Two USB high-speed 2.0 host ports (type A) support removable flash drives for external storage				
	Device	One high-speed 2.0 device port (type B) which will be functional in a future release				
Operating system	Windows CE with Extended Features and MS Office Viewers (includes FTP, VNC client server, ActiveX controls, PDF reader, third-party device support)					
Ethernet ports	Two 10/100Base-T, Auto MDI/MDI-X Ethernet ports that support (device-level ring) DLR, linear, or star network topologies					
Software	FactoryTalk View Studio for Machine Edition, FactoryTalk ViewPoint, version 2.6 or later					
Electrical						
Input voltage	24V DC nom (18...30V DC)	100...240V AC	24V DC nom (18...30V DC)	100...240V AC	24V DC nom (18...30V DC)	100...240V AC
Power consumption	50 W max (2.1 A at 24V DC)	105VA	50 W max (2.1 A at 24V DC)	105VA	50 W max (2.1 A at 24V DC)	105VA
Power supply	Supports (SELV) and (PELV) 24V DC supplies ⁽¹⁾	—	Supports (SELV) and (PELV) 24V DC supplies ⁽¹⁾	—	Supports (SELV) and (PELV) 24V DC supplies ⁽¹⁾	—
Mechanical						
Weight, approx	1.2 kg (2.65 lb)		1.47 kg (3.25 lb)		1.58 kg (3.48 lb)	
Dimensions, (HxWxD), approx	170 x 212 x 69.6 mm 6.69 x 8.35 x 2.74 in.		179 x 285 x 69.6 mm 7.05 x 11.22 x 2.74 in.		190 x 280 x 69.6 mm 7.48 x 11.02 x 2.74 in.	
Cutout dimensions, (HxW), approx	142 x 184 mm 5.59 x 7.24 in.		142 x 237 mm 5.59 x 9.33 in.		162 x 252 mm 6.38 x 9.92 in.	

(1) DC-powered terminals support safety extra-low voltage (SELV) and protective extra-low voltage (PELV) 24V DC power supplies such as cat. nos. 1606-XLP95E, 1606-XLP100E, 2711P-RSACDIN.

Table 4 - PanelView Plus 7 Performance 10-in and 12-in Terminals

Attribute	10-in. Touch		10-in. Touch with Keypad		12-in. Touch	
	2711P-T10C22D9P	2711P-T10C22A9P	2711P-B10C22D9P	2711P-B10C22A9P	2711P-T12W22D9P	2711P-T12W22A9P
Operator input	Touch		Touch with keypad		Touch	
Display type	TFT Color					
Display size, diagonal	10.4-in.				12.1-in.	
Viewing area (WxH)	211 x 158 mm				261 x 163 mm	
Display resolution	800 x 600 SVGA, 18-bit color graphics				1280 x 800 WXGA, 18-bit color graphics	
Aspect ratio	4:3				16:10	
Brightness, typical	300 cd/m ² (Nits)					
Backlight life	White LED, solid-state Life: 50,000 h min at 40° C to half-brightness, backlight is not replaceable					
Touch screen	Analog resistive Actuation rating: 1 million presses Operating force: 100 grams					
Battery (real-time clock backup)	Accuracy: +/-2 minutes per month. Battery life: 4 years min at 25 °C (77 °F) Replacement: CR2032 lithium coin cell					
Memory	System User 1 GB 512 MB					
Secure Digital (SD) card slot	One SD card slot for external storage; supports cat. no. 1784-SDx cards					
USB ports	Host Device Two USB high-speed 2.0 host ports (type A) support removable flash drives for external storage One high-speed 2.0 device port (type B) which will be functional in a future release					
Operating system	Windows CE with Extended Features and MS Office Viewers (includes FTP, VNC client server, ActiveX controls, PDF reader, third-party device support)					
Ethernet ports	Two 10/100Base-T, Auto MDI/MDI-X Ethernet ports that support (device-level ring) DLR, linear, or star network topologies					
Software	FactoryTalk View Studio for Machine Edition, FactoryTalk ViewPoint, version 2.6 or later					
Electrical						
Input voltage	24V DC nom (18...30V DC)	100...240V AC	24V DC nom (18...30V DC)	100...240V AC	24V DC nom (18...30V DC)	100...240V AC
Power consumption	50 W max (2.1 A at 24V DC)	105VA	50 W max (2.1 A at 24V DC)	105VA	50 W max (2.1 A at 24V DC)	105VA
Power supply	Supports (SELV) and (PELV) 24V DC supplies ⁽¹⁾	—	Supports (SELV) and (PELV) 24V DC supplies ⁽¹⁾	—	Supports (SELV) and (PELV) 24V DC supplies ⁽¹⁾	—
Mechanical						
Weight, approx	2.28 kg (5.03 lb)		2.58 kg (5.69 lb)		2.54 kg (5.60 lb)	
Dimensions, (HxWxD), approx	252 x 297 x 69.6 mm 9.92 x 11.69 x 2.74 in.		252 x 385 x 69.6 mm 9.92 x 15.16 x 2.74 in.		240 x 340 x 69.6 mm 9.69 x 13.39 x 2.74 in.	
Cutout dimensions, (HxW), approx	224 x 269 mm 8.82 x 10.59 in.		224 x 335 mm 8.82 x 13.19 in.		218 x 312 mm 8.58 x 12.28 in.	

(1) DC-powered terminals support safety extra-low voltage (SELV) and protective extra-low voltage (PELV) 24V DC power supplies such as cat. nos. 1606-XLP95E, 1606-XLP100E, 2711P-RSACDIN.

Table 5 - PanelView Plus 7 Performance 15-in and 19-in Terminals

Attribute	15-in. Touch		15-in. Touch with Keypad		19-in. Touch	
	2711P-T15C22D9P	2711P-T15C22A9P	2711P-B15C22D9P	2711P-B15C22A9P	2711P-T19C22D9P	2711P-T19C22A9P
Operator input	Touch		Touch with keypad		Touch	
Display type	TFT Color					
Display size, diagonal	15-in.				19-in.	
Viewing area (WxH)	304 x 228 mm				376 x 301 mm	
Display resolution	1024 x 768 XGA, 18-bit color graphics				1280 x 1024 SXGA, 18-bit color graphics	
Aspect ratio	4:3				5:4	
Brightness, typical	300 cd/m ² (Nits)					
Backlight life	White LED, solid-state Life: 50,000 h min at 40° C to half-brightness, backlight is not replaceable					
Touch screen	Analog resistive Actuation rating: 1 million presses Operating force: 100 grams					
Battery (real-time clock backup)	Accuracy: +/-2 minutes per month. Battery life: 4 years min at 25 °C (77 °F) Replacement: CR2032 lithium coin cell					
Memory	System User					
Secure Digital (SD) card slot	One SD card slot for external storage; supports cat. no. 1784-SDx cards					
USB ports	Host Device					
Operating system	Windows CE with Extended Features and MS Office Viewers (includes FTP, VNC client server, ActiveX controls, PDF reader, third-party device support)					
Ethernet ports	Two 10/100Base-T, Auto MDI/MDI-X Ethernet ports that support (device-level ring) DLR, linear, or star network topologies					
Software	FactoryTalk View Studio for Machine Edition, FactoryTalk ViewPoint, version 2.6 or later					
Electrical						
Input voltage, DC	24V DC nom (18...30V DC)	100...240V AC	24V DC nom (18...30V DC)	100...240V AC	24V DC nom (18...30V DC)	100...240V AC
Power consumption, DC	50 W max (2.1 A at 24V DC)	105VA	50 W max (2.1 A at 24V DC)	105VA	50 W max (2.1 A at 24V DC)	105VA
Power supply	Supports (SELV) and (PELV) 24V DC supplies ⁽¹⁾	—	Supports (SELV) and (PELV) 24V DC supplies ⁽¹⁾	—	Supports (SELV) and (PELV) 24V DC supplies ⁽¹⁾	—
Mechanical						
Weight, approx	3.69 kg (8.14 lb)		4.14 kg (9.13 lb)		5.62 kg (12.40 lb)	
Dimensions, (HxWxD), approx	318 x 381 x 69.6 mm 12.52 x 15.00 x 2.74 in		329 x 484 x 69.6 mm 12.95 x 19.06 x 2.74 in		411 x 485 x 69.6 mm 16.18 x 19.09 x 2.74 in	
Cutout dimensions, (HxW), approx	290 x 353 mm 11.42 x 13.90 in		290 x 418 mm 11.42 x 16.46 in		383 x 457 mm 15.08 x 17.99 in	

(1) DC-powered terminals support safety extra-low voltage (SELV) and protective extra-low voltage (PELV) 24V DC power supplies such as cat. nos. 1606-XLP95E, 1606-XLP100E, 2711P-RSACDIN.

Product Dimensions

The table provides product dimensions. The 10.4-inch touch and combination keypad with touch devices are shown for illustrative purposes. All other terminal sizes look similar.

Figure 1 - PanelView Plus 7 Performance Dimensions - 10.4-in. Model

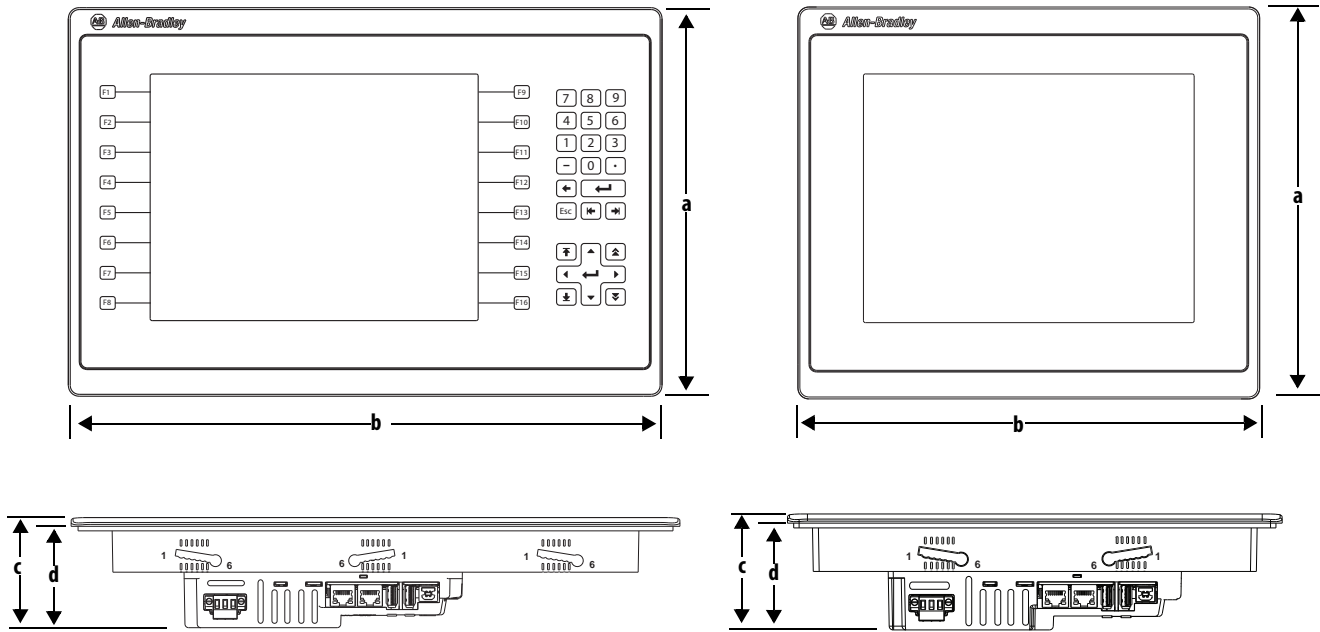


Table 6 - Product Dimensions - PanelView Plus 7 Performance Terminals

Terminal Size	Input Type	Height (a) mm (in.)	Width (b) mm (in.)	Overall Depth (c) mm (in.)	Mounted Depth (d) mm (in.)
6.5 in.	Key/touch	179 (7.05)	285 (11.22)	69.6 (2.74)	63.6 (2.50)
	Touch	170 (6.69)	212 (8.35)	69.6 (2.74)	63.6 (2.50)
9 in.	Touch	190 (7.48)	280 (11.02)	69.6 (2.74)	63.6 (2.50)
10.4 in.	Key/touch	252 (9.92)	385 (15.16)	69.6 (2.74)	63.6 (2.50)
	Touch	252 (9.92)	297 (11.69)	69.6 (2.74)	63.6 (2.50)
12.1 in.	Touch	246 (9.69)	340 (13.39)	69.6 (2.74)	63.6 (2.50)
15 in.	Key/touch	329 (12.95)	484 (19.06)	69.6 (2.74)	63.6 (2.50)
	Touch	318 (12.52)	381 (15.00)	69.6 (2.74)	63.6 (2.50)
19 in.	Touch	411 (16.18)	485 (19.09)	69.6 (2.74)	63.6 (2.50)

TIP When mounted in a panel, the front of the bezel extends less than 6.36 mm (0.25 in.) from the front of the panel.

Accessories

[Table 7](#)...[Table 11](#) list accessories for the PanelView Plus 7 Performance terminals.

Table 7 - Protective Overlays

Cat. No. ⁽¹⁾	Display Size	Operator Input	
		Touch	Key and Touch
2711P-RGT7SP	6.5-in.	•	
2711P-RGB7P			•
2711P-RGT9SP	9-in. (wide)	•	
2711P-RGT10SP	10.4-in.	•	
2711P-RGB10P			•
2711P-RGT12SP	12.1-in. (wide)	•	
2711P-RGT15SP	15-in.	•	
2711P-RGB15P			•
2711P-RGT19P	19-in.	•	

(1) Three overlays are shipped with each catalog number.

Table 8 - Power Supplies and Power Terminal Blocks

Cat. No.	Description	Quantity
1606-XLP95E	DIN-rail power supply, 24...28V DC output voltage, 95 W	1
1606-XLP100E	DIN-rail power supply, 24...28V DC output voltage, 100 W	1
2711P-RSACDIN	DIN-rail power supply, AC-to-DC, 85...265V AC, 47...63 Hz	1
2711P-RTBAP	3-pin AC power terminal block	10
2711P-RTBDSP	3-pin DC power terminal block	10

Table 9 - Mounting Hardware

Cat. No.	Description	Quantity
2711P-RMCP ⁽¹⁾	Mounting levers	16

(1) These levers are also used with the PanelView Plus 7 Performance terminals. They cannot be used with other PanelView terminals.

Table 10 - Secure Digital (SD) Cards

Cat. No.	Description
1784-SD1	1 GB SD card
1784-SD2	2 GB SD card
2711C-RCSD	USB to SD adapter for SD card

Table 11 - Battery Replacement

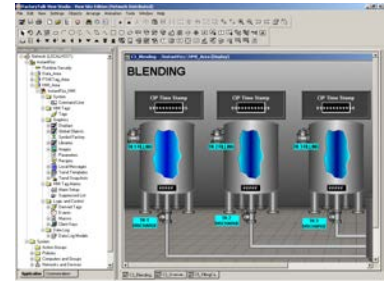
Cat. No.	Description	Quantity
2711P-RY2032	Lithium coin cell battery, CR2032 equivalent	1

HMI Software

All PanelView Plus 7 terminals are configured with FactoryTalk® View Studio software and have an integrated runtime system called FactoryTalk View Machine Edition Station.

Machine Edition Station runs projects that are developed with FactoryTalk View Studio software and is included on all PanelView Plus 7 terminals.

Two versions of FactoryTalk View Studio software support application development for PanelView Plus 7 terminals.



Cat. No. ⁽¹⁾	Description
9701-VWSTMENE	FactoryTalk View Studio for Machine Edition software - Configuration software for developing and testing machine level human machine interface (HMI) applications. Includes RSLinx® Enterprise and KEPServer Enterprise software.
9701-VWSTENE	FactoryTalk View Studio software - Configuration software for developing and testing machine level and supervisory level human machine interface (HMI) applications.

(1) Order localized versions of the software by replacing EN in the catalog number with DE for German, FR for French, JP for Japanese, or ZH for Chinese.

You can import PanelView Standard/PanelBuilder™32 and PanelView e applications into FactoryTalk View Studio software as Machine Edition applications by using the Machine Edition Import Wizard. The Import Wizard steps you through a few options such as scaling to a new screen resolution size, and then converts objects, text, tags, and communication configurations to ones that are available in Machine Edition.



FactoryTalk ViewPoint software, an add-on to FactoryTalk View Studio software, allows plant managers, production supervisors, system integrators, and other key stakeholders to view and control real-time plant floor operations remotely from a web browser. FactoryTalk ViewPoint enabled displays are fully scalable and animated in the browser. The remote user can also view displays that are not the active display of the terminal.

Each PanelView Plus 7 terminal contains one license that supports a single client connection to the terminal. No additional software is required.

For a complete list of available HMI software, visit <http://www.rockwellautomation.com/rockwellsoftware>.

Additional Resources

These documents contain more information about related products from Rockwell Automation.

Resource	Description
PanelView Plus 7 Performance Terminals User Manual, publication 2711P-UM008A-EN-P	Provides instructions on how to install, configure, and operate the PanelView Plus 7 Performance terminals.
Industrial Automation Wiring and Grounding Guidelines, publication 1770-4.1	Provides general guidelines on how to install a Rockwell Automation® industrial system.
Product Certifications website, http://www.ab.com	Provides declarations of conformity, certificates, and other certification details.

You can view or download publications at <http://www.rockwellautomation.com/literature/>. To order paper copies of technical documentation, contact your local Allen-Bradley® distributor or Rockwell Automation sales representative.

Notes:

Important User Information

Read this document and the documents listed in the additional resources section about installation, configuration, and operation of this equipment before you install, configure, operate, or maintain this product. Users are required to familiarize themselves with installation and wiring instructions in addition to requirements of all applicable codes, laws, and standards.

Activities including installation, adjustments, putting into service, use, assembly, disassembly, and maintenance are required to be carried out by suitably trained personnel in accordance with applicable code of practice.

If this equipment is used in a manner not specified by the manufacturer, the protection provided by the equipment may be impaired.

In no event will Rockwell Automation, Inc. be responsible or liable for indirect or consequential damages resulting from the use or application of this equipment.

The examples and diagrams in this manual are included solely for illustrative purposes. Because of the many variables and requirements associated with any particular installation, Rockwell Automation, Inc. cannot assume responsibility or liability for actual use based on the examples and diagrams.

No patent liability is assumed by Rockwell Automation, Inc. with respect to use of information, circuits, equipment, or software described in this manual.

Reproduction of the contents of this manual, in whole or in part, without written permission of Rockwell Automation, Inc., is prohibited.

Documentation Feedback

Your comments will help us serve your documentation needs better. If you have any suggestions on how to improve this document, complete this form, publication [RA-DU002](#), available at <http://www.rockwellautomation.com/literature/>.

Rockwell Automation maintains current product environmental information on its website at <http://www.rockwellautomation.com/rockwellautomation/about-us/sustainability-ethics/product-environmental-compliance.page>

Allen-Bradley, CompactLogix, ControlLogix, FactoryTalk, PanelView, LISTEN. THINK. SOLVE, Rockwell Automation, and Rockwell Software are trademarks of Rockwell Automation, Inc. Trademarks not belonging to Rockwell Automation are property of their respective companies.

Rockwell Otomasyon Ticaret A.Ş., Kar Plaza İş Merkezi E Blok Kat:6 34752 İçerenköy, İstanbul, Tel: +90 (216) 5698400

www.rockwellautomation.com

Power, Control and Information Solutions Headquarters

Americas: Rockwell Automation, 1201 South Second Street, Milwaukee, WI 53204-2496 USA, Tel: (1) 414.382.2000, Fax: (1) 414.382.4444
Europe/Middle East/Africa: Rockwell Automation NV, Pegasus Park, De Kleetlaan 12a, 1831 Diegem, Belgium, Tel: (32) 2 663 0600, Fax: (32) 2 663 0640
Asia Pacific: Rockwell Automation, Level 14, Core F, Cyberport 3, 100 Cyberport Road, Hong Kong, Tel: (852) 2887 4788, Fax: (852) 2508 1846